



**i300 3.0**

## Inspection system



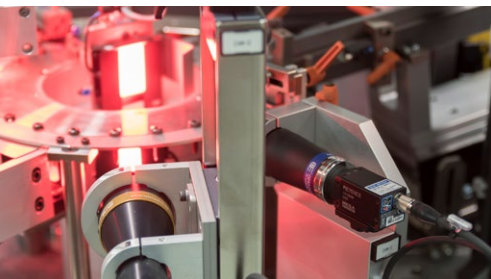
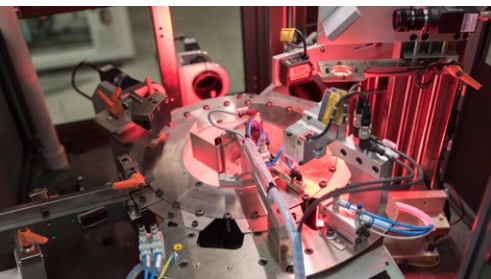
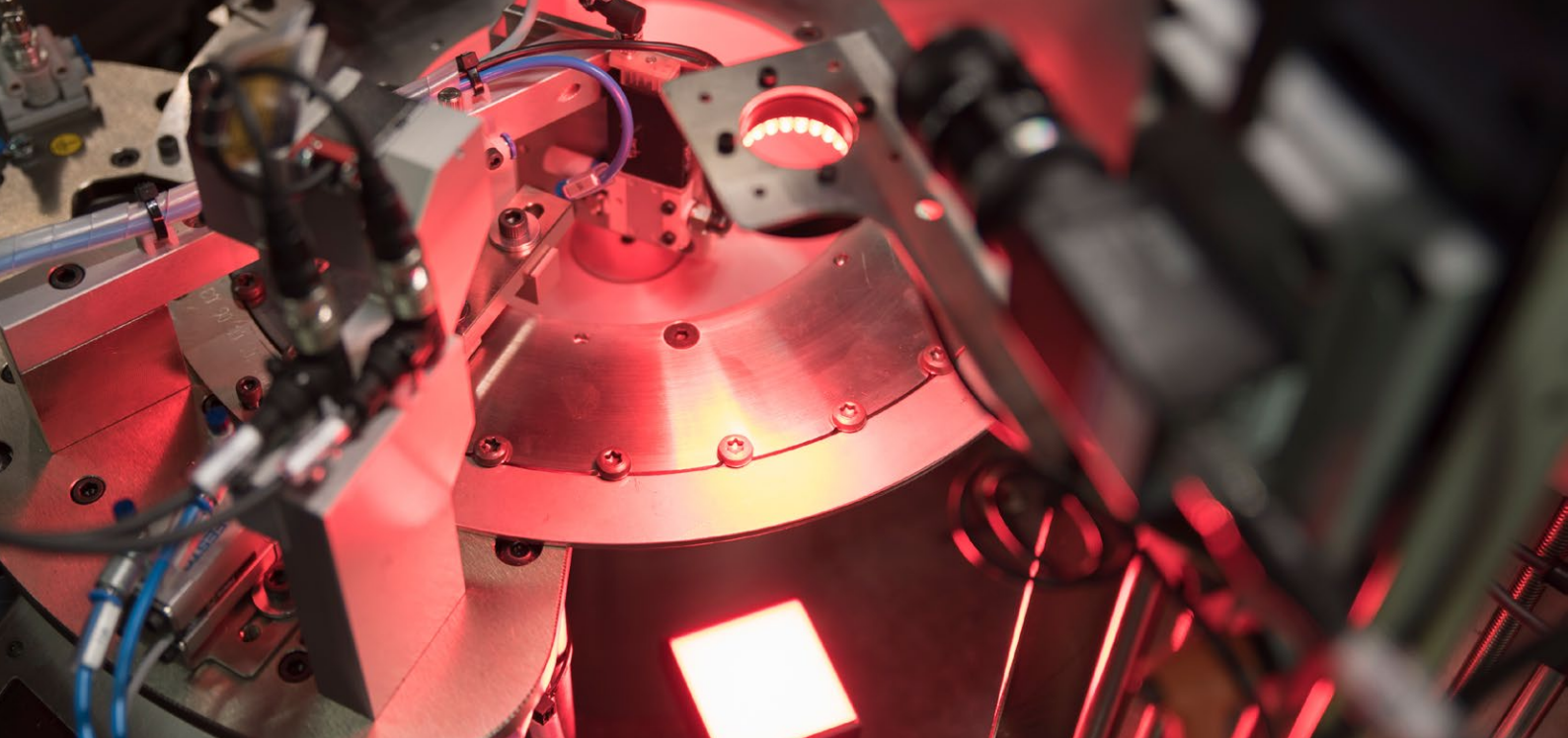
NEW **3.1MP** CAMERA  
**50% MORE ACCURATE**

Regg Inspection designs and  
manufactures **high quality inspection  
systems** with modular design.

 **Regginspection**

HIGH PRECISION INSPECTION SYSTEMS

[www.regginspection.com](http://www.regginspection.com)



## Feeding

- Fully Integrated feeding system for smooth and fast inspection.
- Widest choice of feeding system depending on inspected part.
- Single piece loading or fast continuous loading.
- Ready to accept customer's feeding systems.

## Positioning

- Wide rotary table for fast and accurate inspection.
- 300 mm (11.8") dia. rotary table, the widest in the industry.
- All parts are always in a traceable position from entrance to exits chutes.
- The widest rotary table in the industry for higher inspection modules.
- Up to six (6) inspection modules plus two (2) exit chutes.
- Internal part of the table stationary for easy positioning of inspection devices and accessories.
- Robust module frames and supports for precision and durability.

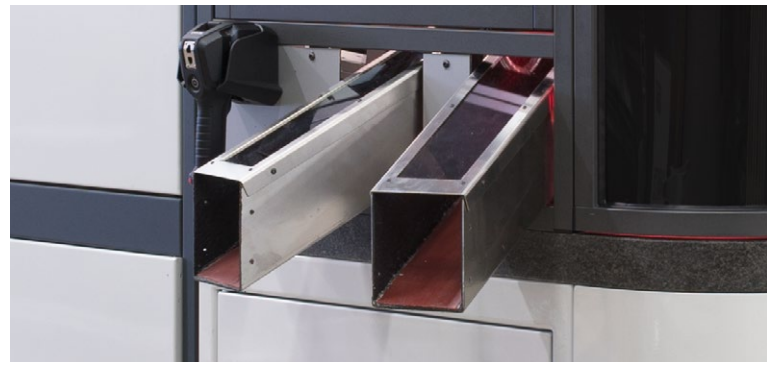
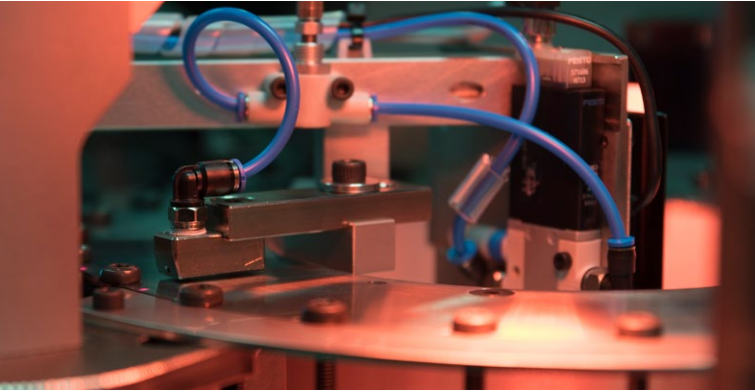
## Control

- Camera modules.
- Latest vision technologies.
- High resolution digital Firewire / USB 3.0 / GigE cameras.
- Special Ultra-High resolution camera for controls.
- Highest quality bi-telecentric optics.
- Telecentric high-performance illuminators.



## Exit chutes

- Two exit chutes
  - Packing
  - Conveyors



## Peripheral equipments

- Vacuum system
- Marking systems
- Teleservice
- Barcode scanner

# FEATURES AND BENEFITS

## Machine design

### Modular Design

Possibility to upgrade the machine with additional inspection modules for a calibrated investment.

### One layer granite base foundation for strength and stability.

- The most robust machine in the industry.
- Granite base symmetry and flatness less than 0,0004" (0,01 mm).
- Granite base stability for vibration inhibiting due to plant machine operation, other plant operating machinery, vibratory feeders, etc.

**Highest quality pneumatic, electric and mechanical components** for reduced maintenance and increased up time.

**Surround enclosure** designed for ease of sight and ease of entry for operator and management.

**Wide doors on any machine side** with safety switches for easy machine access for easy change over and maintenance. **Swinging operator panel** easily accessible in all positions.

## Machine control

### Easy and intuitive Human Machine Interface (HMI) both for operators and programmers.

- Wide Touch screen control panel.
- All controls integrated into one screen.
- Help on line for easy troubleshooting.
- All data and trend visible.
- All data recorded and exportable via USB or WiFi.

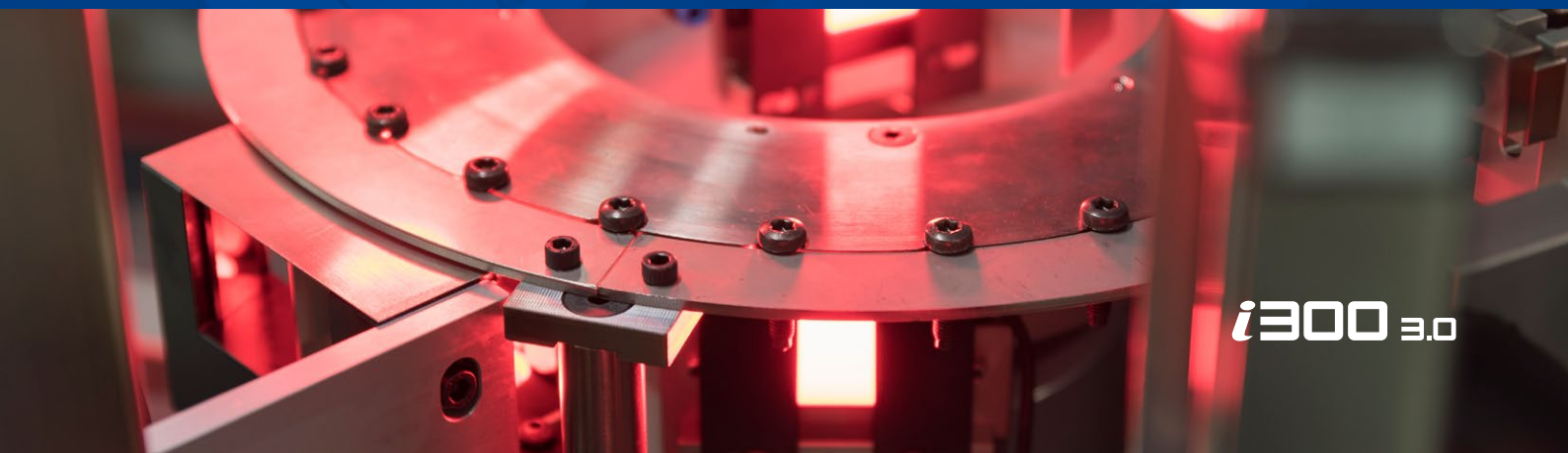
### Two onboard computer for ideal separation of system functionality and operational assurance.

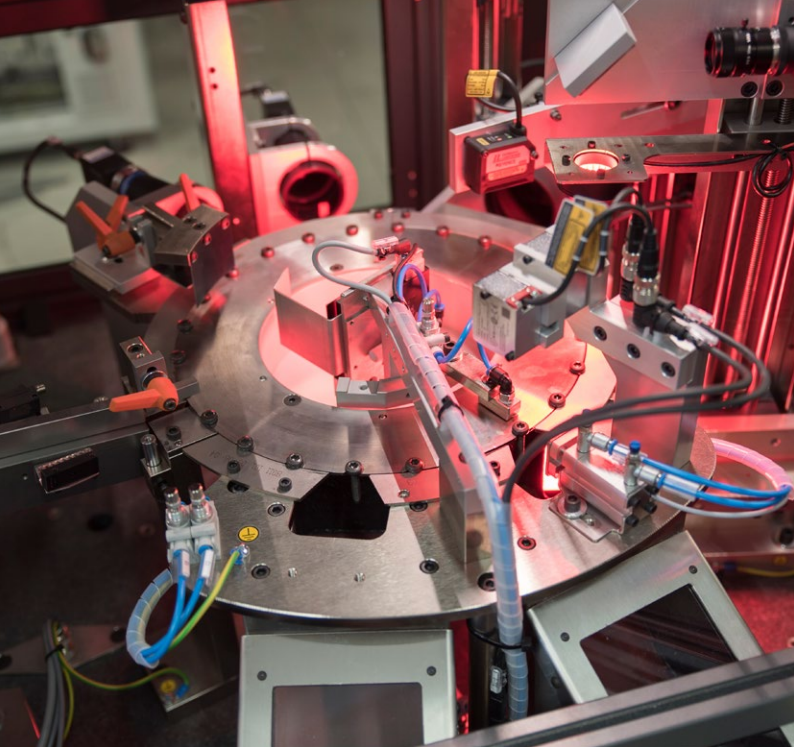
- Industrial Computer for program software utilizing Windows 7 operational software.
- PLC computer for managing support equipment including, table rotation, units synchronization, loading and off-loading. Fanless Industrial PC for durability and reduced maintenance.

**Two separate and sealed electrical cabinets** for reduced interference, easier maintenance and longer electrical components life.

**Built-in cpk function. Anti-locking device** to minimize manual intervention.

- The table tries to disengage itself automatically in case a part is blocking the table.





## Modular design

The machine can be equipped with vision systems, mechanical recess control, 360 degree profile control, eddy current crack detection, hardness control, and other special applications.

## Skilled staff

The company has a highly skilled technical staff, which is able to design and manufacture the highest quality inspection systems in the market.

## Service

Service center with skilled technicians are based in all main markets.

Machine specifications	i300	i300-HS
Min / Max dia. (mm)	M2.5 - M12	M2.5 - M12
Min / Max lenght (mm)	3 - 100	3 - 100
Max camera number	5	5
Mechanical controls		•
Eddy current control		•
Hardness y/n		•
Table type	Steel	Steel
Max speed (pcs/min)	450	650
Dimension (mm)	950 x 1000 x 2000	
Weight (kg)	550	

All specifications are subject to change without prior notice. All pictures are for reference only. © Copyright REGG Inspection S.r.l.



HIGH PRECISION INSPECTION SYSTEMS

### Regg Inspection S.r.l.

Via Ticino, 30/G  
20064 - Gorgonzola (MI) - Italy  
Tel. +39 02 9574 6376 - Fax +39 02 9574 4153  
customerservice@regginspection.it  
www.regginspection.it

### Regg Inspection GmbH

Finkenweg 27  
D-41352 - Korschenbroich - Germany  
Tel. +49 21 61 47 38 75 7  
sales@regginspection.de  
www.regginspection.de

### Regg Inspection Corp.

28003 Center Oaks Ct #107  
Wixom - MI 48393 - USA  
Tel. +1 248 308 3639 - Fax +1 248 493 5920  
sales@regginspection.com  
www.regginspection.com

### Regg Japan LLC

Torii Mae 63-2, Azabu-Cho, Miyoshi-Shi, Aichi-Ken  
〒470-0206 - Japan  
Tel. +81 (0)80-1246-0906  
sales@regginspection.jp  
www.regginspection.jp